



SHLS



GLOBAL BUSINESS PARTNER

- S**hipping Agency
- H**arbour Service
- L**ogistics
- S**hip Parts & Supply

Tel : +82-55-682-4405/6

Fax : +82-55-682-4407

Website : www.shls.com

E-Mail : ops@shls.com

Address : 540, Jangseungpo-dong, Geoje-si, Gyeongnam, Republic of Korea

PROFILE

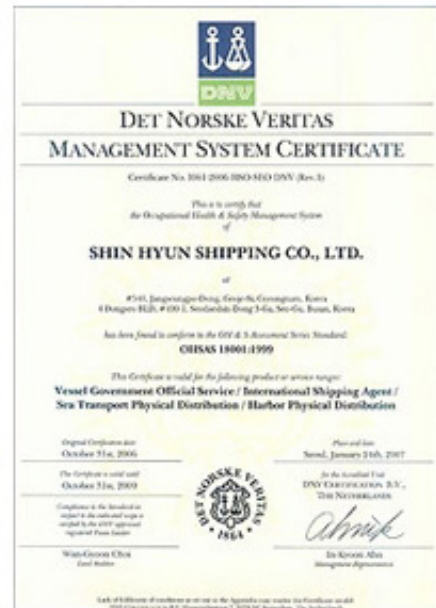
- 1979. 01. Established
- 1999. 05. Obtained Permission for Ship's Supplies from Maritime Affairs & Port Office
- 2002. 05. Obtained Permission for Harbour Service from Customs and Maritime Affairs & Post Office
- 2002. 05. Obtained Certificate of Ship Broking Business
- 2003. 01. Obtained Permission for Management of Ship & Crew from Maritime Affairs & Port Office
- 2006. 10. Obtained DNV Certificate
 - Authorization OHSAS 18001:1999
 - ISO 9001:2000, KS A 9001:2001
 - ISO 14001:2004, KS A 14001:2004
- 2007. 05. Joined Korea International Trade Association
- 2007. 09. Obtained Certificate of International Forwarding Business from Gyeongnam Provincial Governor
- 2008. 10. Obtained Certificate of Sea Transportation Business for Coastal Area



ISO 9001



ISO 14001



OHSAS 18001

CEO's MESSAGE

Welcome to SHIN HYUN Logistics & Shipping established in Geoje, Korea as a leading shipping agency in 1979. We have provided shipowners with a large variety of port agency services, which are Newbuilding, Drydocking, Initial supplies (Stores / Spares / Provisions) and so on at various shipyards such as SHI (Samsung Heavy Industries), DSME (Daewoo Shipbuilding & Marine Engineering Co., Ltd.), STX, SLS, SPP, Sungdong, 21C Shipbuilding Co., Ltd., Samho Shipbuilding Co., Ltd. and Jinse Shipbuilding Co., Ltd.

SHIN HYUN Logistics & Shipping is more than sure that our quotation is very much competitive and reasonable compared with other similar agencies. Our clients always receive the full benefits of net and negotiated costs for the various services offered by us, and all expenses charged to our clients are actual costs without any unnecessary overcharges. Under this principle, our clients feel and enjoy, at all times, high quality and the most economical agency services.

This is the reason we are appointed as various shipowners' regional agent giving full satisfaction to our clients.

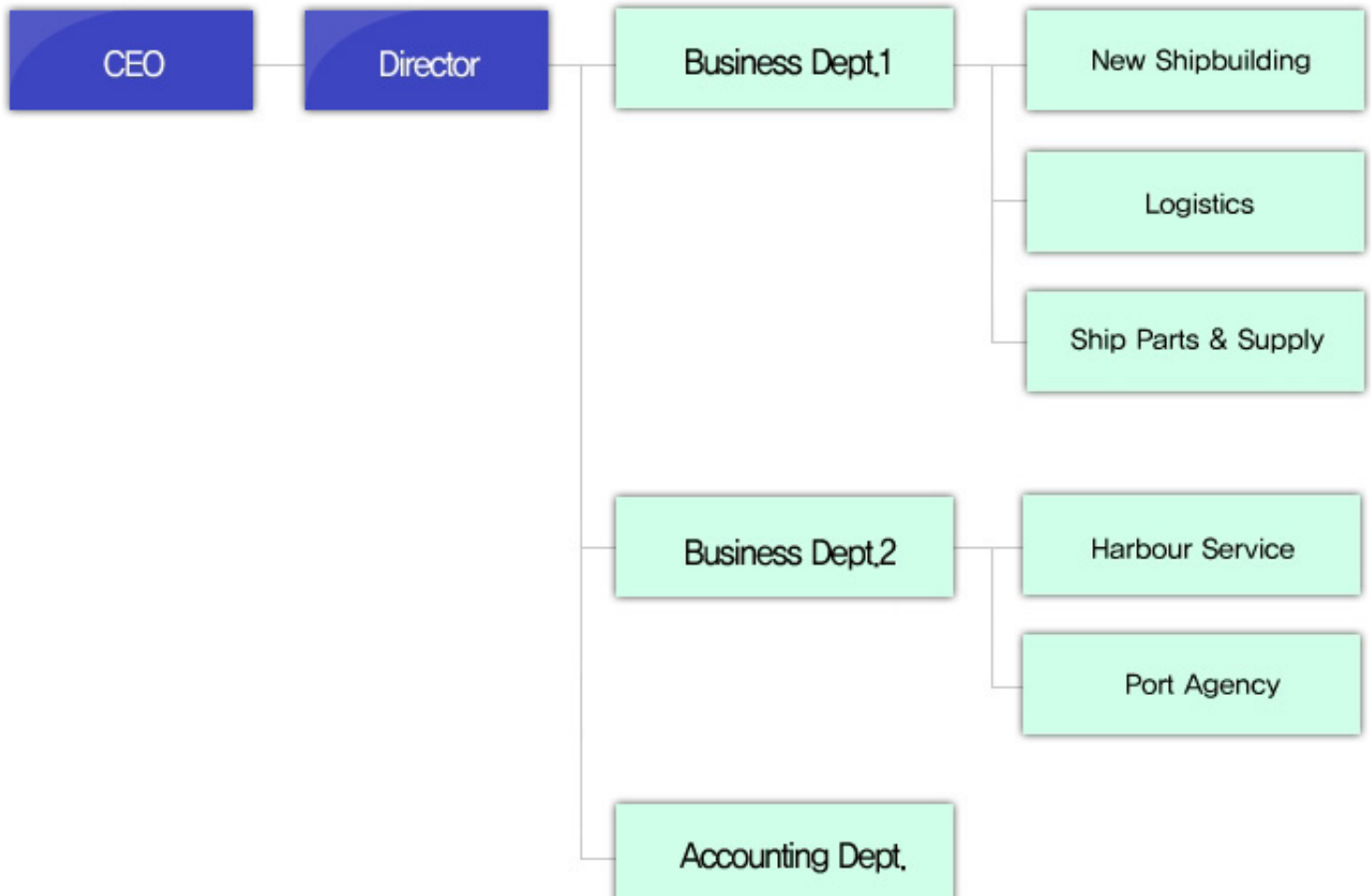
We would like to take this opportunity of introducing ourselves with desire to build mutual and fruitful cooperations with your good company as 'Principals' and our company as your Regional Shipping Agency here in Korea.

We are always ready to be your reliable friends !!

Best regards

T.M. Kang / CEO

ORGANIZATION



NEW SHIPBUILDING

Work scope is as follows.

- | VISA & Immigration
- | Pick-up & Transportation Service
- | Accommodations (owned & private APT)
- | Accommodations (Hotel, Motel, Condominium and Inn)
- | Rental Car
- | Flight Tickets
- | Site Office Open
- | Office Equipment & Stationeries
- | CS Center (next to your door, placed in STX, SLS & Jinse shipyard)
 - Personal & Car Passing Card
 - D-9 Visa for shipowner
- | Secretary
- | Petty Cash & Cash To Master
- | Team Rebuilding & Party for pre Naming Ceremony/Delivery
- | Global Forwarding Service
- | Spare Parts Handling
- | Initial Ship's Stores
- | Provision
- | Bunkering
- | Ship Sailing Formalities
- | Miscellaneous matters

We are very confident that we could serve best services for you and your company in Korea and make you satisfied in all things as we have had much experience in aforementioned matters with well-trained/dynamic/energetic staff members and systematic organization.

We would like to be really your agency. If you have some questions and need more information, you may contact us in your free time.



PORT AGENCY

We provide our Port Agency Service at port of Gohyeon (SHI shipyard) and Okpo (DSME shipyard) for our clients who own and/or operate vessels with Steel Plate, Hatch Cover, Ship Block for assembling at shipyard, etc from neighboring ports and countries.



And we also act as an agent for Lay-by at anchorage of Jangseungpo whenever our clients' ladies need to be repaired or crew change & ship spare parts delivery etc are urgently required.

FRESH WATER SUPPLY

We operate 5 vessels in Geoje, Sacheon & Tongyeong area to supply Fresh Water whenever our clients need it. We are only one company to supply in Geoje with sole License from Regional Maritime Affairs & Port Office.

MV SHIN HYUN (ex- YeoYang2)

Official no. JPC-937123

GRT 33 MT

Length 21.55 M

Depth 5.5 M

Breadth 2.3 M

Capacity of FW tank 130 MT

MV JIN MYUNG 1

Official no. JPR-087623

GRT 291 MT

Length 48 M

Depth 3.5 M

Breadth 9.2 M

Capacity of FW tank 634 MT

MV JIN MYUNG 3 (ex- KumKang2) - Type : Barge

Official no. JPB-505029

GRT 90 MT

Length 23.23 M

Depth 3.14 M

Breadth 7.67 M

Capacity of FW tank 500 MT

MV JIN MYUNG 5 - Type : Barge

Official no. JPB-087754

GRT 168 MT

Length 28.80 M

Depth 4.20 M

Breadth 9.00 M

Capacity of FW tank 1000 MT

MV JIN MYUNG (ex- YeoYang1)

Official no. JPC-864967

GRT 10 MT

Length 13.92 M

Depth 1.70 M

Breadth 3.40 M

Used to tug MV JIN MYUNG 3 & 5 at present

LAUNCH BOAT

We operate 2 vessels in port of Geoje (Gohyeon & Jangseungpo) to reach to ships anchoring whenever our clients need to use our Launch Boat service.

MV SHIN HYUN 1 (ex- YeoYang7)

Official no. JPC-047656

GRT 5.44 MT

Length 10.90 M

Depth 0.89 M

Breadth 2.95 M

Max 10 Passengers available to be onboard

MV JIN MYUNG 2 (ex- YeoYang3)

Official no. JPC-967157

GRT 13 MT

Length 14.92 M

Depth 1.80 M

Breadth 3.80 M

Max 9 Passengers available to be onboard

For more efficient service, we sometimes operate chartered vessel who can transport about 100 passengers in one trip



SEA & AIR FREIGHT

Sea Freight

- Overseas

We as a cargo broker have arranged suitable vessels to be able to load our cargo, steel plate from Mizushima, Kakogawa & Kimitsu etc. in Japan to port of Okpo in Korea. We have been in good relationship with DSME since October 2005 and have performed about 2,000 mt per month.



- Coastal

We own and operate MV MIN SOO who carries steel plate produced by Dongkuk from port of Pohang to port of Okpo (DSME Shipyard) as a liner about 6 voyages a month since COA is agreed in April, 2008

Particulars

- | IMO no. 9259575
- | Call Sign DSPD9
- | Official no. JJR-079372
- | Type of Ship : Bulk Carrier
- | Port of Registry Jeju
- | Built : 2001
- | GRT/NRT/DWT : 1,580/1,210/2,980 MT
- | LOA /BM/DFT : 74.30/13.60/5.20 M
- | Grain/Bale : 4,280 CBM
- | 1H/1H, Hatch Size 38.40 x 13.0 M
- | Steel Bottom
- | Gearless
- | All Details About



Air Freight

In regards with SHIP PARTS & STORES business, we act as a forwarder. When our customers send or receive goods, we arrange all in one. Our local partner operates bonded warehouse in Busan.

LAND TRANSPORTATION

And also arrange land transportation including bonded transportation according to our customers' requirements.

We participated in special cargo transportation such as Seadrill and Petroserv Project at DSME and also in transportation of boiler tanks, burner boom & various machineries locally.



INTRODUCTION

We supply all kinds of ship parts from small items to engines parts, produced both in Korea and worldwide with quality and reliable delivery in the most economical manner.

We, Shin Hyun Shipping Co., Ltd, as a general agent, have dealt with delivery of the variety of new ships built at several shipyards (SHI, DSME, HHI, SPP, SLS, Sungdong, etc.) in Korea and arranged various agent services involved with shipowners' matter over the past ten years. Especially, we have handled various ship parts including spares & ship stores to be transported / delivered on board new ships from overseas & domestically through air, land or sea freight regardless type of conveyance.

In addition to becoming one of competitive forwarders, we have discovered many manufacturers & vendors in Korea and maintained good relationships with. Through cooperation with the suppliers, we have gained a great deal of technical knowledge on spare parts and now we assist our client shipowners with spare replacement cycle time & advise its alternatives, if applicable.

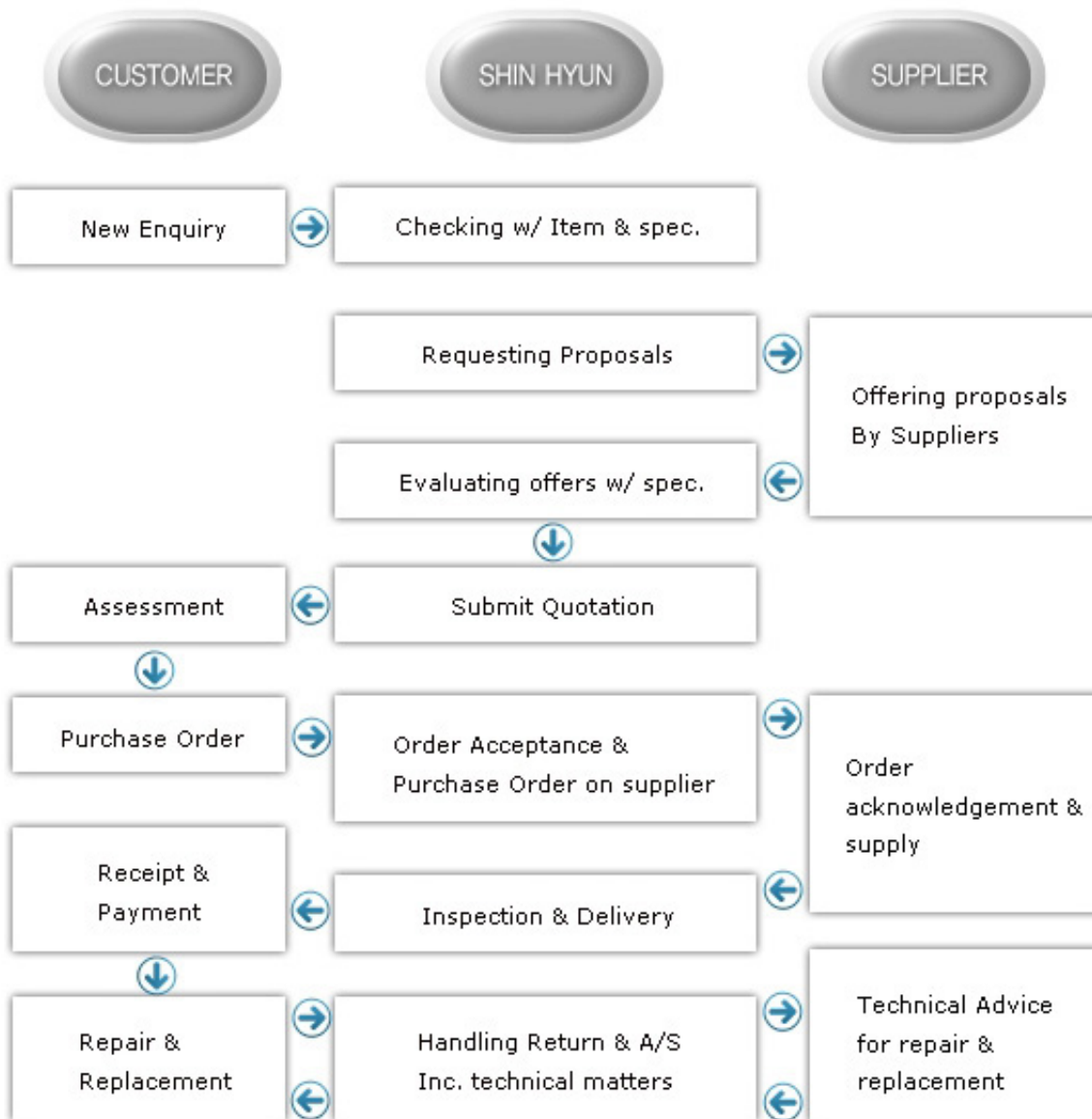
Based on our great experiences in this field, we started SHIP PARTS business in the beginning of 2008 and now are receiving good feedbacks from our existing customers. Further to adding values to our clients, we would like to spread our service to our future customers and share our ideas & know-how with you.

Whenever you need our assistance, we are ready for supplying all kinds of ship parts from small items to engines parts, produced both in Korea and worldwide with quality and reliable delivery in the most economical manner.

SCOPE OF SERVICE

- Supplying ship parts produced domestically or abroad
- Ship parts Forwarding Service
- After-sales Service

[Service Process]



LOCAL PARTNERS

We have discovered many manufacturers & vendors in Korea and maintained good relationships with. Through cooperation with the suppliers, we have gained a great deal of technical knowledge on spare parts and now we assist our client shipowners with spare replacement cycle time & advise its alternatives, if applicable.

Company	Equipments / Items
Kangrim	Marine Boiler, Incinerator, IGS, IGG, Calorifier, Air Reservoirs
Hana Level	Level switch, gauge and indicator, level transmitter, air purge type level gauging system, Cargo monitoring system, radar sensor type cargo monitoring system, bilge high level alarm system
Jung-A Marine	Ship's ladder, Clear View Screen & wiper, ship's door & hatch
SamGong	oil purifier , valve remote control system, accommodation ladder
Yoowon	Steering gear, deck machinery, oil separator & filter
Gorio Pump	All kinds of marine pumps
Saracom	Compass & Auto pilot system, Sound signal Appliances
Marine Radio	Marine Radio System
DongHwa Entec	Steering gear, deck machinery, oil separator & filter
Georim Engineering	Bilge Separator, Sewage pump
Dongnam Crane	All kinds of Marine cranes
Ace Valve	Discharging Valves
SamGun Century	FW unit Filter, Machinery Equipment, Coating
Pan-Asia Precision	Level switch, gauge and indicator, level transmitter, high level alarm system, Cargo monitoring system, pressure transmitter, temperature transmitter
High Air Korea	Compressors, Air-conditioning System
Daeyang Electric	Lightening, Electric & Electronic parts for Maritime use
O-yang Kongjoki	Electric Motors & parts, Bilge Alarms
Others	Halla Automatic Valve(MT.Control Valve), Keystone Valve, Kyung Won Century, NK Fire Protection, Dongwoo Machinery, Bumhan Industry, Hyundai Life Boat, Hyundai Elevator, & etc.